

METALERO

**Targeting Significant
Silver, Gold & Copper Discoveries**

TSX-V: MLO

WWW.METALEROMINING.COM

May 2026

FORWARD LOOKING STATEMENT

DISCLAIMER Metalero Mining Corp. is a Canadian mineral exploration company listed on the Toronto Venture Exchange (TSX-V), which is operated by TMX Group Limited. Neither the TSX-V nor its Market Regulator, the Canadian Investment Regulatory Organization (CIRO) (defined in the Trading Rules and policies of the TSX-V) accepts responsibility for the adequacy or accuracy of information delivered in this presentation.

INFORMATION ONLY, NO OFFER OR SOLICITATION, NO UNAUTHORIZED DISTRIBUTION

This presentation does not constitute an offer to sell or solicitation of an offer to buy any of the securities described herein. The sole purpose of this presentation in verbal, paper or electronic form is strictly for information. This document is strictly private and confidential, and is intended for the person to whom it is provided by Metalero Mining Corp. The contents of the document may not be copied, distributed or reproduced in whole or in part, nor passed to any third party, without the prior, written permission of Metalero Mining Corp.

FORWARD LOOKING STATEMENTS

Certain statements and/or graphics in the Company's press releases, website information and corporate displays, among others, constitute "forward-looking statements". These statements are based on information currently available to the Company and the Company provides no assurance that actual results will meet management's expectations. Forward-looking statements include estimates and statements that describe the Company's future plans, objectives or goals, including words to the effect that the Company or management expects a stated condition or result to occur. Forward-looking statements may be identified by terms such as "believes", "anticipates", "expects", "estimates", "may", "could", "would", "will", or "plan", or their conditional or future forms. Since forward-looking statements are based on assumptions and address future events and conditions, by their very nature they involve inherent risks and uncertainties. Actual results relating to, among other things, results of exploration, project development, reclamation and capital costs of the Company's mineral properties, and the Company's financial condition and prospects, could differ materially from those currently anticipated in such statements for many reasons such as: changes in general economic conditions and conditions in the financial markets; changes in demand and prices for minerals; litigation, legislative, environmental and other judicial, regulatory, political and competitive developments; technological and operational difficulties encountered in connection with the activities of the Company; and other matters discussed in this presentation. This list is not exhaustive of the factors that may affect any of the Company's forward-looking statements. The Company does not undertake to update any forward-looking statement that may be made from time to time by the Company or on its behalf, except if required to do so by applicable securities laws. These and other factors should be considered carefully, and recipients should not place undue reliance on the Company's forward-looking statements.

FORWARD-LOOKING STATEMENTS AND/OR INFORMATION RELATED TO EXPLORATION

Relating to exploration, the identification of exploration targets and any implied future investigation of such targets on the basis of specific geological, geochemical and geophysical evidence or trends are future-looking and subject to a variety of possible outcomes which may or may not include the discovery, or extension, or termination of mineralization. Further, areas around known mineralized intersections or surface showings may be marked by wording such as "open", "untested", "possible extension" or "exploration potential" or by symbols such as "?". Such wording or symbols should not be construed as a certainty that mineralization continues or that the character of mineralization (e.g. grade or thickness) will remain consistent from a known and measured data point. The key risks related to exploration in general are that chances of identifying economical reserves are extremely small.

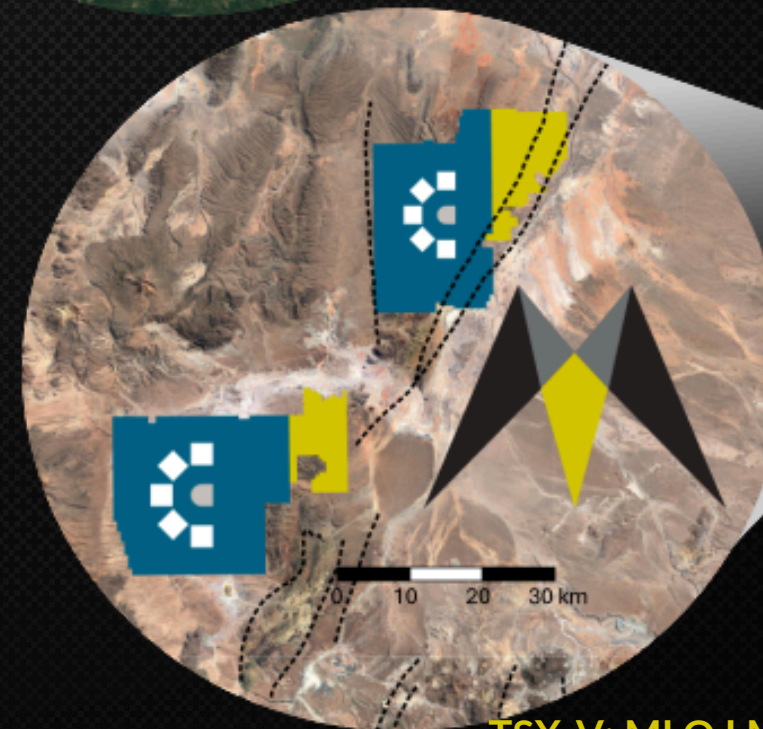
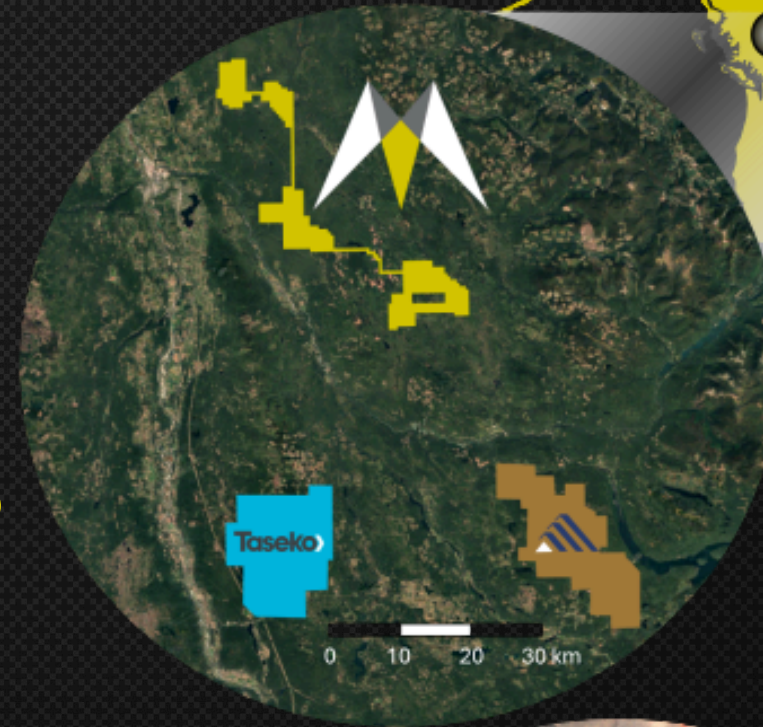
THIRD-PARTY INFORMATION

Certain statements and/or graphics in the Company's press releases, website information and corporate displays, among other materials, may contain third-party historical data and other information that have not been verified by Metalero Mining Corp. and may not be accurate or complete, therefore the information should not be relied upon.

QUALIFIED PERSONS

Rob L'Heureux, M.Sc., P.Geol., and Michael Dufresne, M.Sc., P.Geol., P.Geo., serve as a Qualified Persons, as defined by National Instrument NI 43-101, responsible for reviewing and approving the technical content of all materials publicly disclosed by Metalero Mining Corp., including the contents of this presentation.

Targeting **world-class** discoveries in highly prospective mineral belts in BC and Bolivia



MANAGEMENT AND DIRECTORS



Rob L'Heureux
M.Sc., P.Geol. CEO, President & Director

- Professional Geologist with 25+ years of mineral exploration experience globally
- Managed grassroots to resource-definition drill programs
- Worked across a wide range of base and precious metals projects



James Greig
B.A. MBA Independent Director

- 20 years' experience across exploration, development, and production in the resource sector
- Key contributor to the 5Moz Esaase Gold Project
- Director and officer of multiple public companies



John Williamson
P.Geol. Chairman & Independent Director

- Professional Geologist with 35+ years of global mining experience
- Founder and chairman of 20+ successful companies, including Metals Group
- Has raised over \$1B for exploration, development, and mining projects worldwide



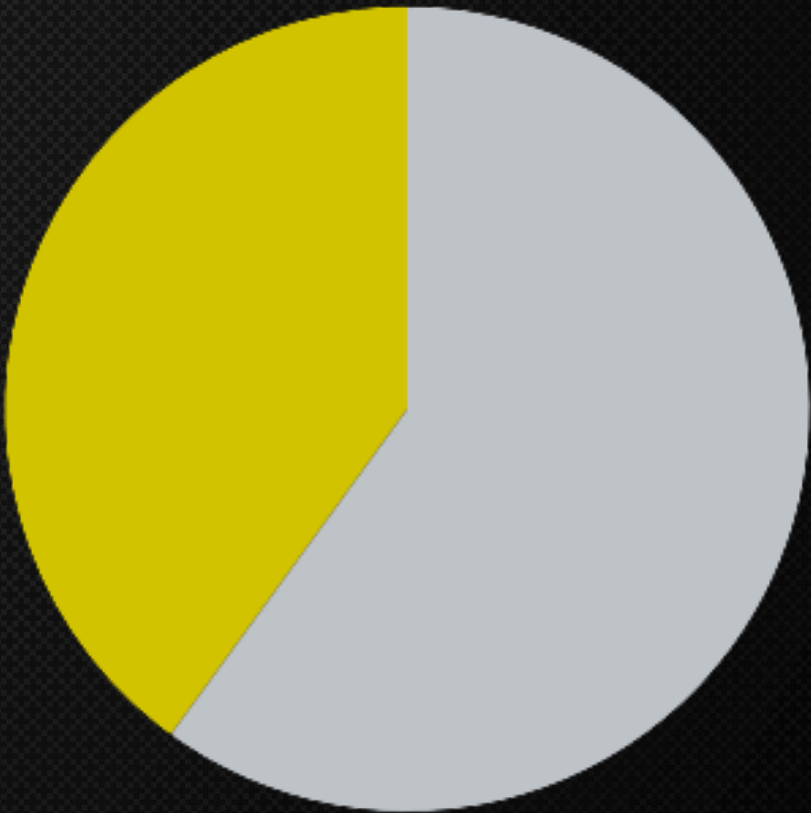
Sean Mager
Director & Advisor

- 30+ years of experience in the global mining sector spanning corporate development, stakeholder relations, regulatory affairs, finance, and operations
- Co-Founder of Metals Group

CAPITAL STRUCTURE

Shares Outstanding	30,838,500
Fully Diluted	40,384,024
Market Cap	\$5.4 Million
Share Price	\$0.175
Warrants	9,545,524
52 Week Range	\$0.10 - \$0.20

**as of May 19, 2026. Warrants priced between \$0.25-0.35*



~40%

Held By Management & Insiders

WHY BOLIVIA, WHY NOW?

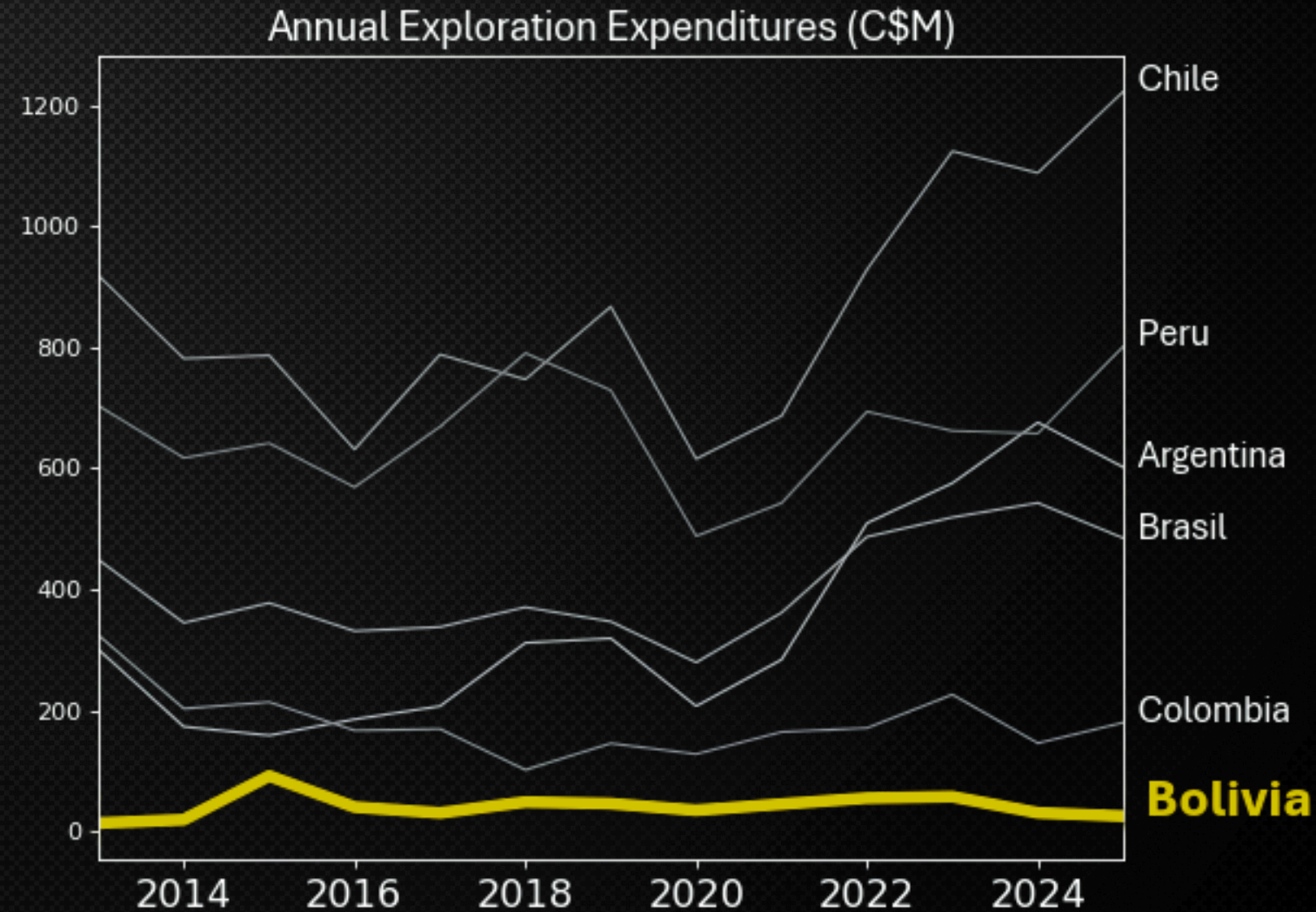
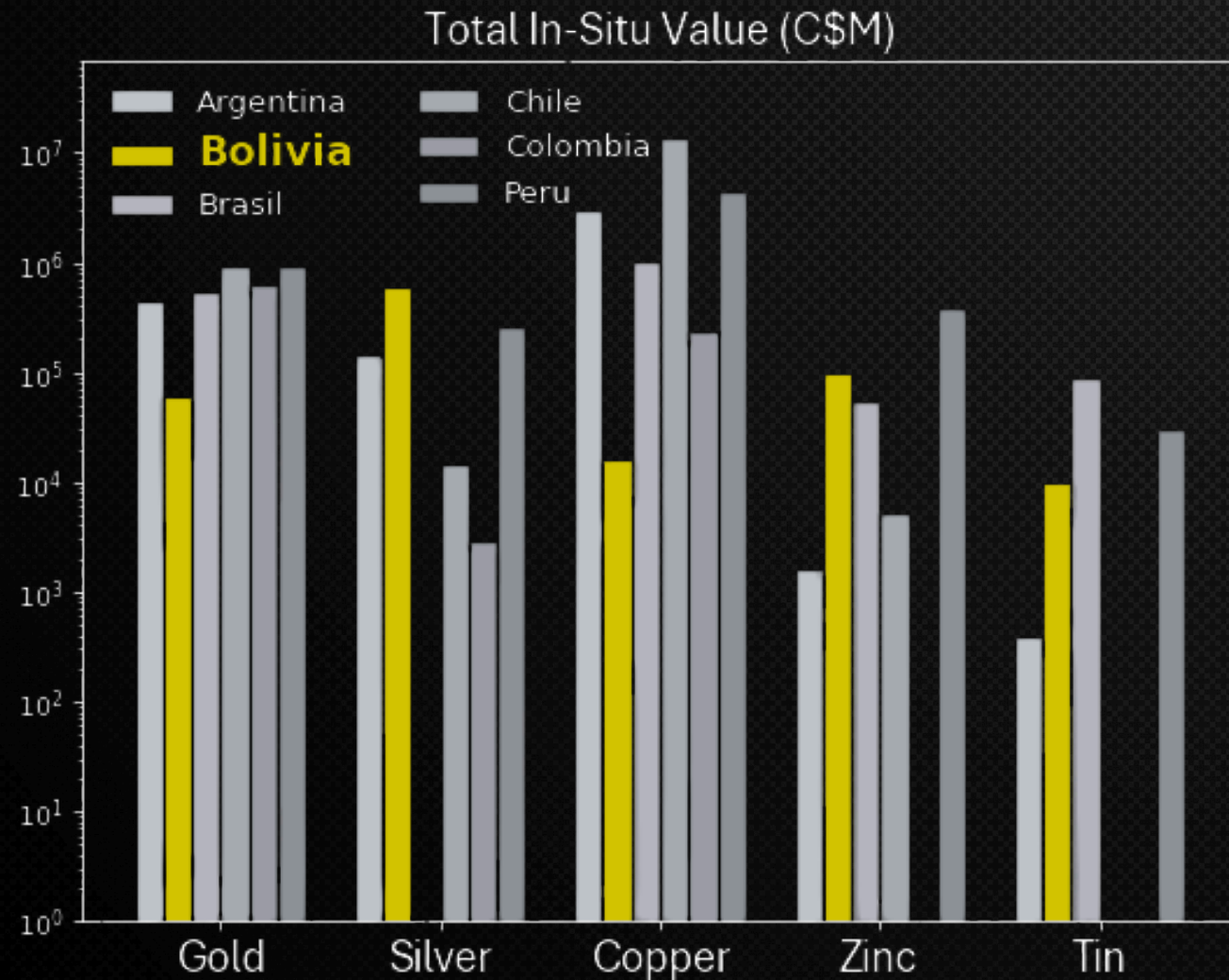
*Greenfield discovery potential
at brownfield risk profile*

- MLO concessions adjacent to the San Cristobal Mine and Isidorito Prospect
- Early mover advantage
- Top 5 producer of silver and tin
- Vast resource potential in the Cordillera and Amazon Craton
- Low cost exploration
- A new government committed to increasing foreign investment



Bolivia is an Untapped Frontier

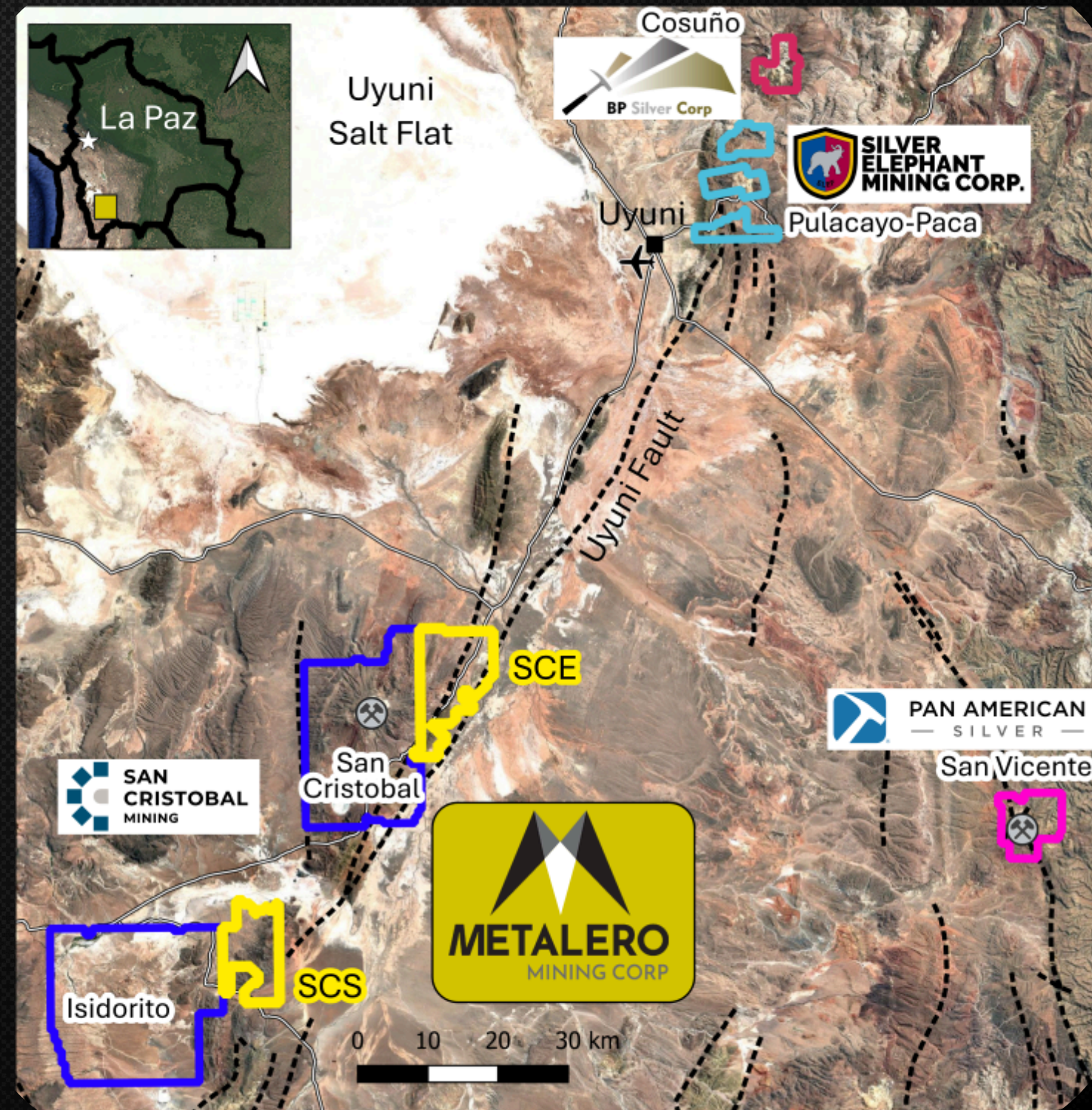
Bolivia has world class mineral reserves yet is underexplored compared to peer countries



Source: S&P Capital IQ (2026)

Strategic Land Positions in a Proven Mining Corridor

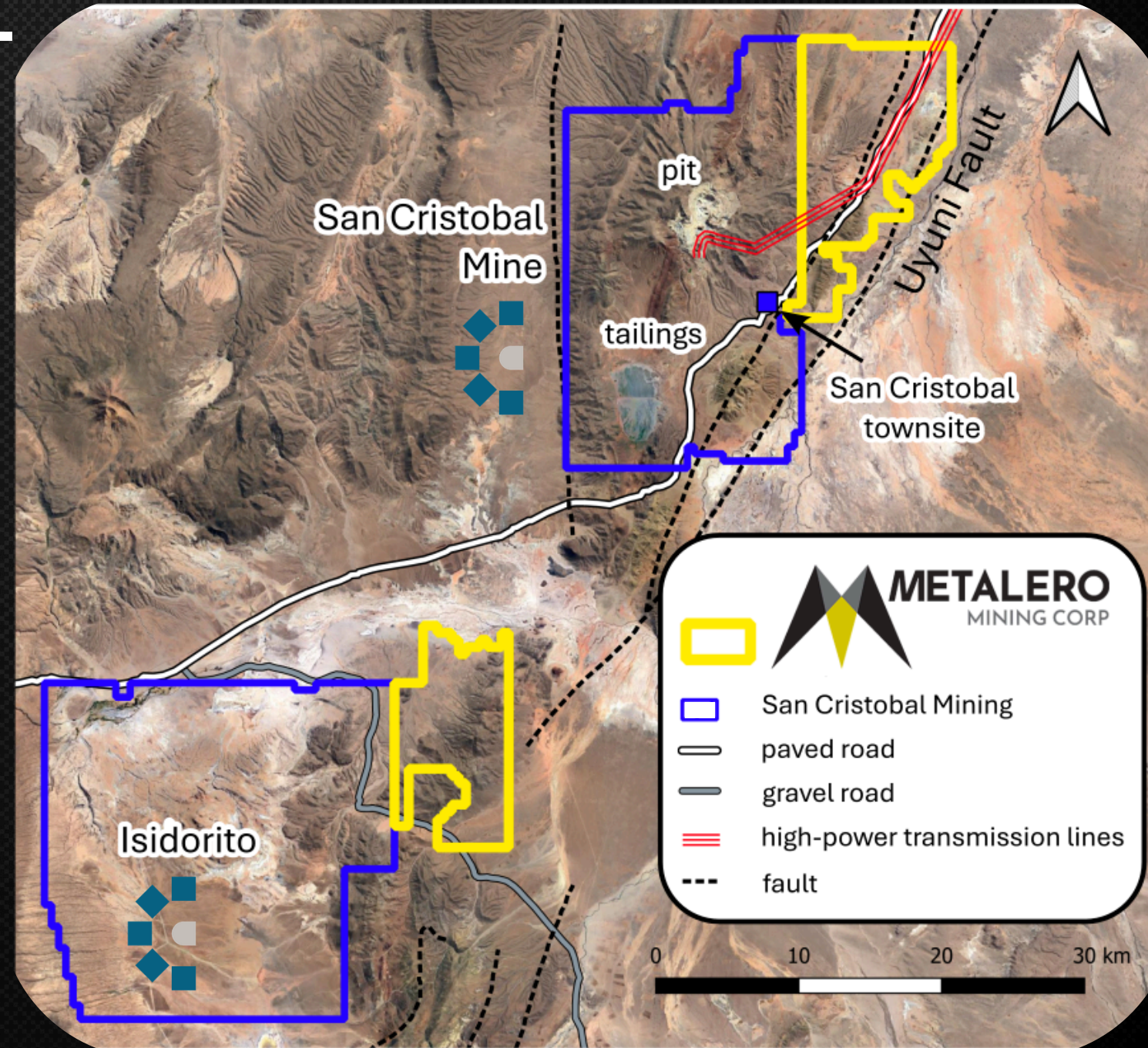
- **San Cristobal East (SCE)**
- **San Cristobal South (SCS)**
- ~230 km² amongst world-class silver-lead-zinc mines
- Along Uyuni Fault System, on strike with major producers
- No modern exploration
- Exploration commencing Q2



NEIGHBOURING SAN CRISTOBAL MINE AND THE ISIDORITO PROSPECT

A Global Top-5 Silver Producer

- Currently producing ~38 million silver equivalent ounces per year
- Potential mine life to 2050
- \$17USD/Ag-Eq ounce AISC
- Aggressive mine site exploration with up to 14 drill rigs
- Ten drill rigs at Isidorito - 40 km south of San Cristobal



BENSON PROJECT HIGHLIGHTS



Located in the prolific Quesnel Trough, hosting multiple Cu-Au discoveries



Major mining companies interested in the Quesnel porphyry belt



173 km² Land position



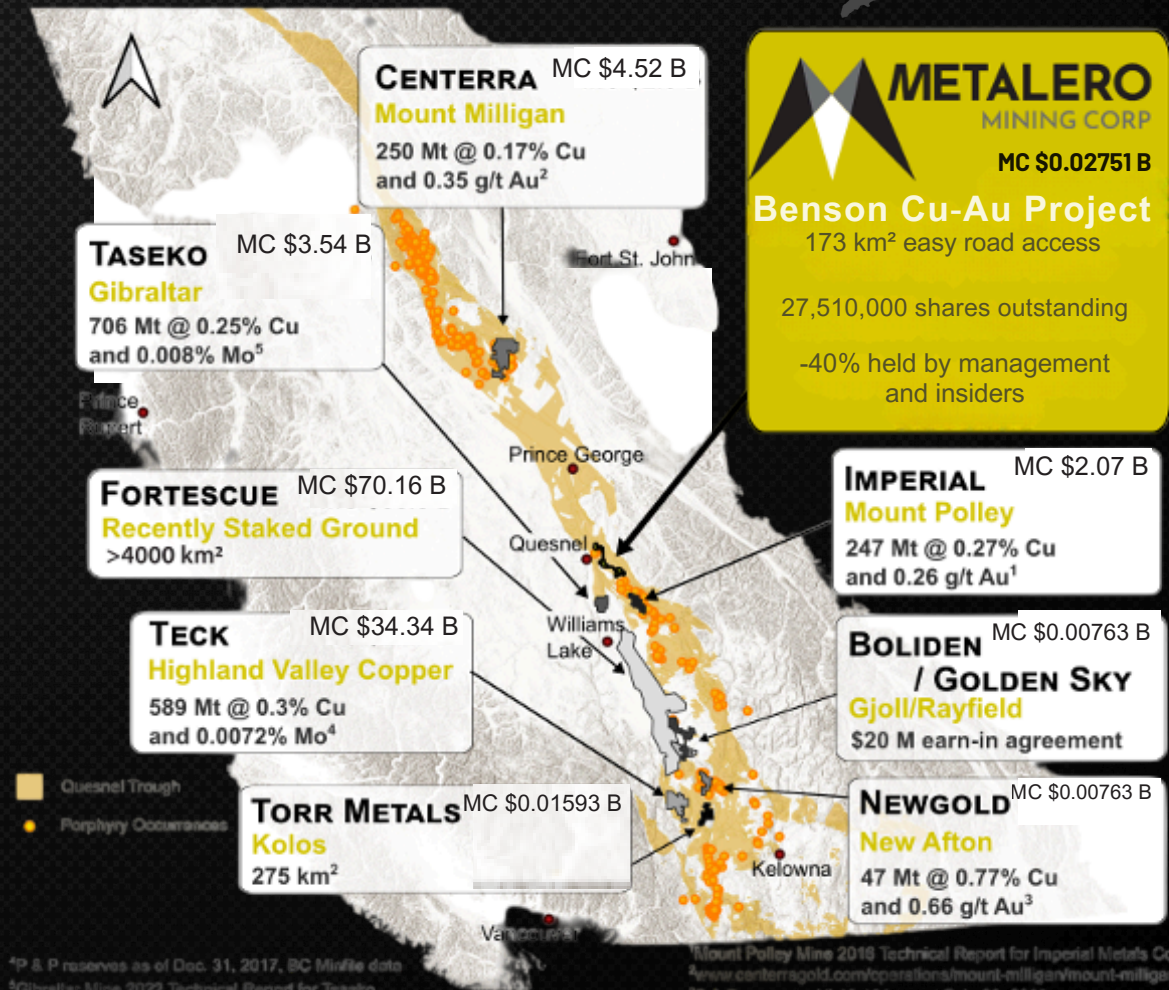
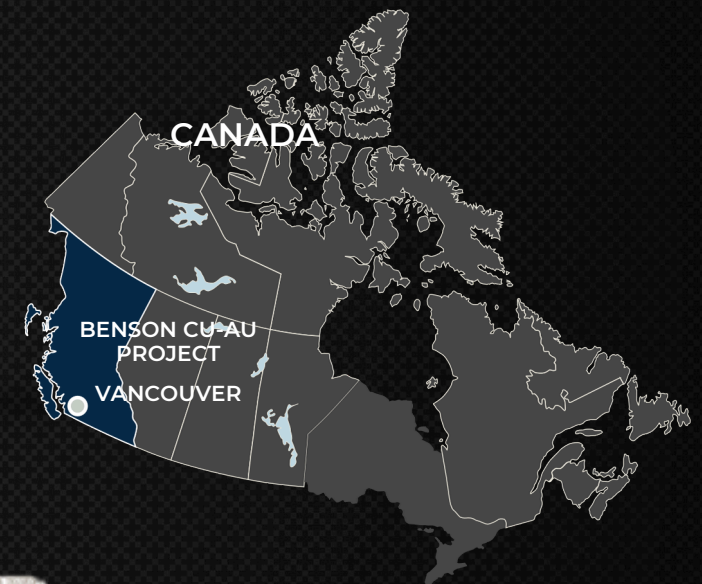
Road accessible, located 15 km east of Quesnel, British Columbia



Year-round access and low cost exploration



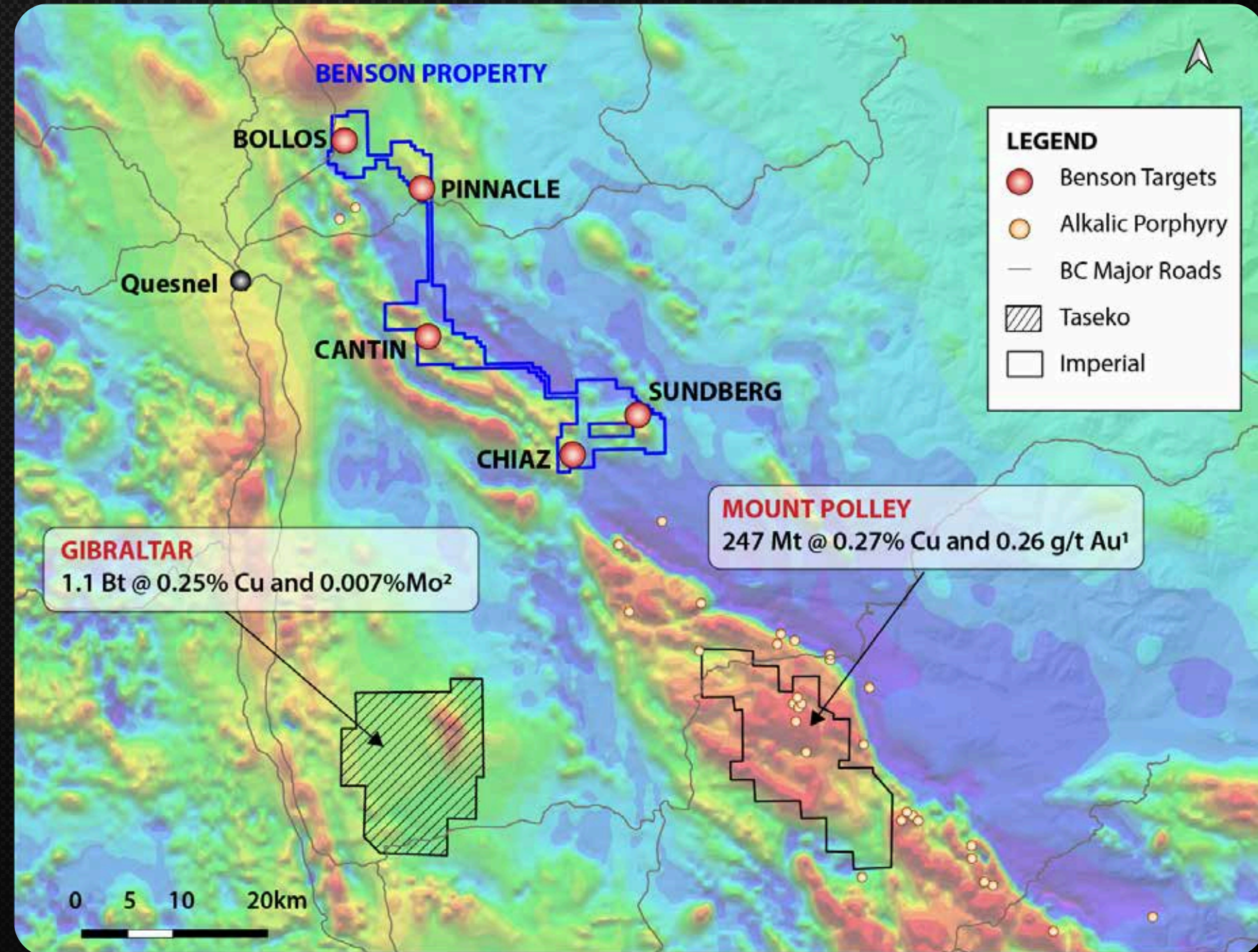
Option to obtain 100 % ownership



1. Mount Polley Mine 2016 Technical Report for Imperial Metals Corporation
 2. www.centerragold.com/operations/mount-milligan/mount-milligan-reserves
 3. P & P reserves, NI 43-101 report Feb 28, 2020
 4. P & P reserves as of Dec 31, 2017, BC Minfile data

BENSON-PROPERTY GEOLOGY

- 5+ targets identified by Geoscience BC artificial intelligence work
- Along trend from Mt Polley underlain by the same prospective geology of Triassic-Jurassic intrusive suites
- Traversed by large-scale structures important as fluid conduits
- Historically underexplored
- Strong potential for a new discovery on the Benson property



1. Mount Polley Mine 2016 Technical Report for Imperial Metals Corporation
2. <https://www.tasekomines.com/properties/reserves-and-resources>

WHY INVEST?



Opportunity

- A large-scale Bolivian land position beside a global Top-5 producer
- 5 Cu-Au targets within a 173 km² land package in BC, supported by excellent infrastructure and year-round access



World Class Districts

- Bolivia provides exposure to a vast, underexplored mineral district
- BC's Quesnel Trough hosts long-lived mines and >360 Cu-Au mineral occurrences



Attractive Capital Structure

- 31M shares outstanding, 40M fully diluted
- Management and insiders own ~40% of the company
- Lowest-priced shares issued at \$0.12



Experienced Management and Technical Team

- Abundant technical and capital markets experience
- Strong history of significant returns to shareholders
- Global operating experience



TSX-V: MLO

WWW.METALEROMINING.COM

CONTACT

HEAD OFFICE

250 South Ridge NW

Suite 300

Edmonton, AB

T6H 4M9

1.780.916.5482

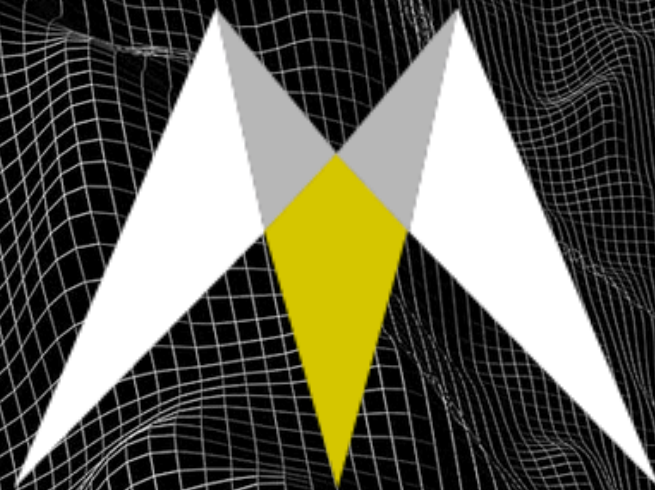
EMAIL

General Inquiries

info@metaleromining.com

Accounting

accounting@metaleromining.com



METALERO

TSX-V: MLO

WWW.METALEROMINING.COM