



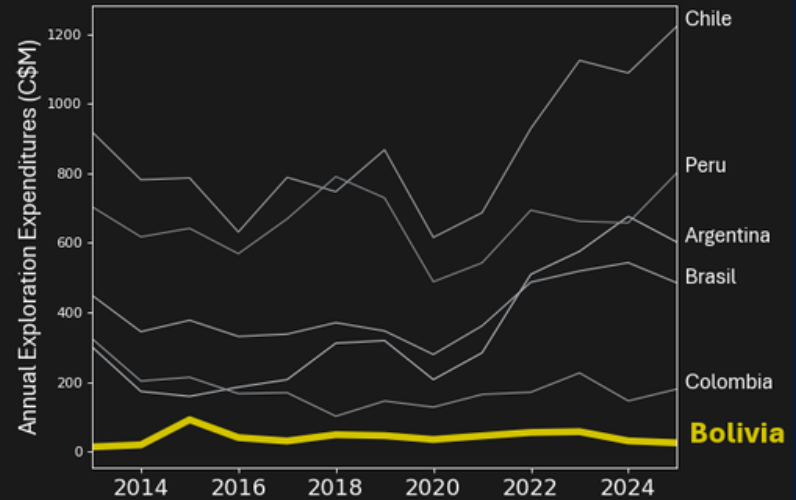
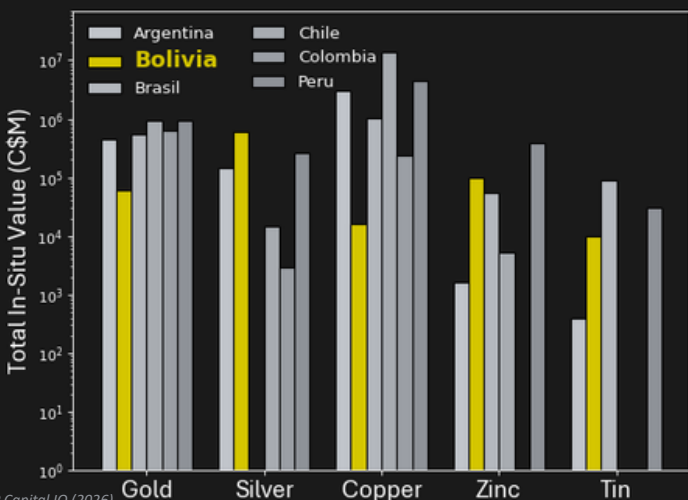
Greenfield Discovery Potential at Brownfield Risk Profile

WHY BOLIVIA?

-  MLO concessions adjacent to the San Cristobal Mine and Isidorito Prospect
-  #1 Early mover advantage
-  Top 5 producer of silver and tin
-  Vast resource potential in the Cordillera and Amazon Craton
-  Low cost exploration
-  A new government committed to increasing foreign investment



Bolivia has world class mineral reserves yet is underexplored compared to peer countries



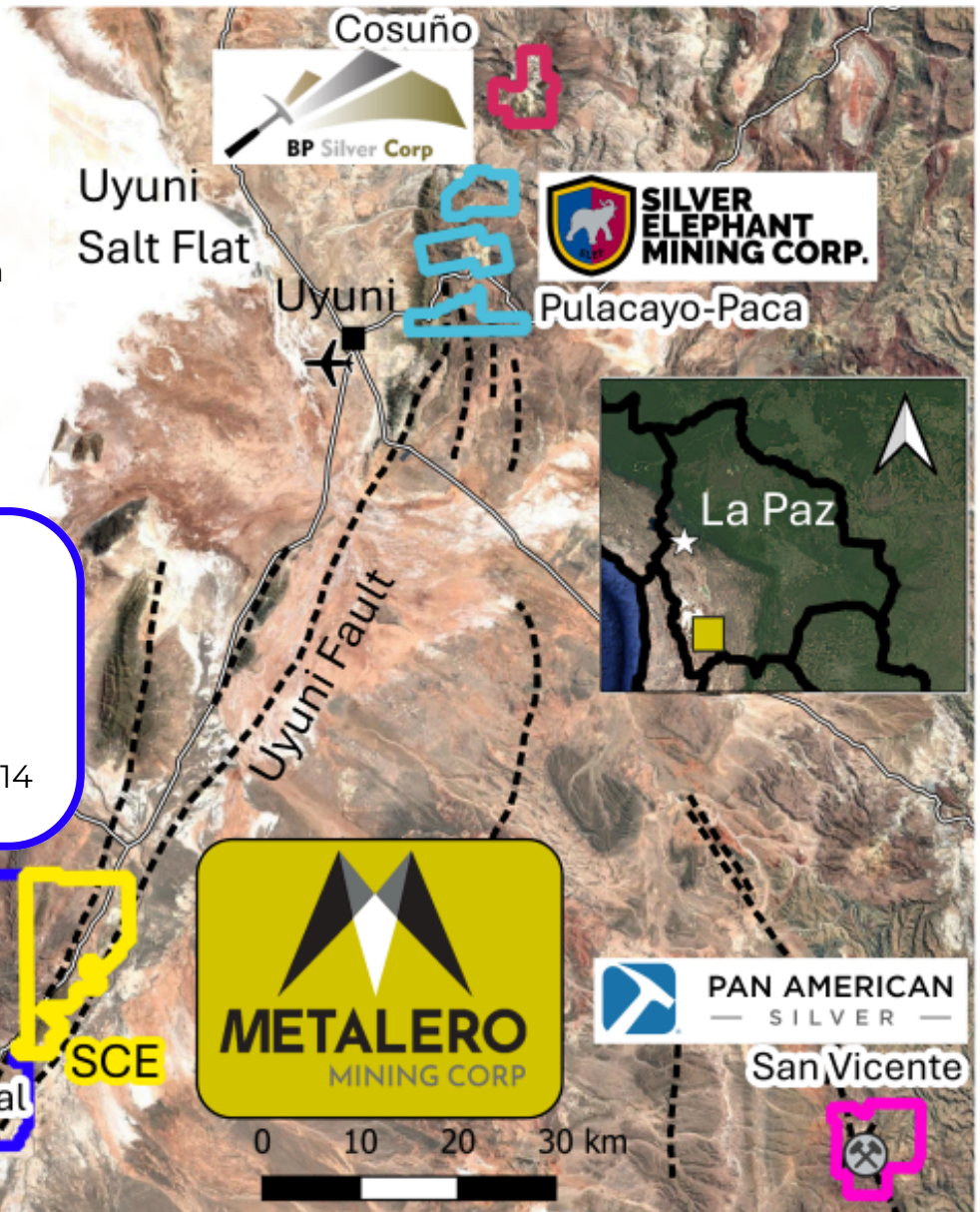
PROJECT HIGHLIGHTS

San Cristobal East (SCE) San Cristobal South (SCS)

- ~230 km² amongst world - class silver-lead-zinc mines
- Along Uyuni Fault System, on strike with major producers
- No modern exploration
- Exploration commencing Q2

San Cristobal Mining

- Global Top-5 silver producer
- Potential mine life to 2050
- Recent exploration success, 14 active drill rigs



CAPITAL STRUCTURE

Shares o/s	30,838,500	Share Price	\$0.195
Warrants	9,545,524	52 Week Range	\$0.10 - \$0.29
exp Aug and Dec 2027			
Market Cap	\$6.0M		
as of June 17, 2026			



MANAGEMENT

Rob L'Heureux CEO, President and Director
John Williamson Chairman & Independent Director

Jesse Teufeld CFO
Sean Mager Director & Advisor
James Greig Independent Director