

**METALERO**

**Targeting Significant  
Silver, Gold & Copper Discoveries**

**TSX-V: MLO**

**WWW.METALEROMINING.COM**

**June 2026**

# FORWARD LOOKING STATEMENT

**DISCLAIMER** Metalero Mining Corp. is a Canadian mineral exploration company listed on the Toronto Venture Exchange (TSX-V), which is operated by TMX Group Limited. Neither the TSX-V nor its Market Regulator, the Canadian Investment Regulatory Organization (CIRO) (defined in the Trading Rules and policies of the TSX-V) accepts responsibility for the adequacy or accuracy of information delivered in this presentation.

## **INFORMATION ONLY, NO OFFER OR SOLICITATION, NO UNAUTHORIZED DISTRIBUTION**

This presentation does not constitute an offer to sell or solicitation of an offer to buy any of the securities described herein. The sole purpose of this presentation in verbal, paper or electronic form is strictly for information. This document is strictly private and confidential, and is intended for the person to whom it is provided by Metalero Mining Corp. The contents of the document may not be copied, distributed or reproduced in whole or in part, nor passed to any third party, without the prior, written permission of Metalero Mining Corp.

## **FORWARD LOOKING STATEMENTS**

Certain statements and/or graphics in the Company's press releases, website information and corporate displays, among others, constitute "forward-looking statements". These statements are based on information currently available to the Company and the Company provides no assurance that actual results will meet management's expectations. Forward-looking statements include estimates and statements that describe the Company's future plans, objectives or goals, including words to the effect that the Company or management expects a stated condition or result to occur. Forward-looking statements may be identified by terms such as "believes", "anticipates", "expects", "estimates", "may", "could", "would", "will", or "plan", or their conditional or future forms. Since forward-looking statements are based on assumptions and address future events and conditions, by their very nature they involve inherent risks and uncertainties. Actual results relating to, among other things, results of exploration, project development, reclamation and capital costs of the Company's mineral properties, and the Company's financial condition and prospects, could differ materially from those currently anticipated in such statements for many reasons such as: changes in general economic conditions and conditions in the financial markets; changes in demand and prices for minerals; litigation, legislative, environmental and other judicial, regulatory, political and competitive developments; technological and operational difficulties encountered in connection with the activities of the Company; and other matters discussed in this presentation. This list is not exhaustive of the factors that may affect any of the Company's forward-looking statements. The Company does not undertake to update any forward-looking statement that may be made from time to time by the Company or on its behalf, except if required to do so by applicable securities laws. These and other factors should be considered carefully, and recipients should not place undue reliance on the Company's forward-looking statements.

## **FORWARD-LOOKING STATEMENTS AND/OR INFORMATION RELATED TO EXPLORATION**

Relating to exploration, the identification of exploration targets and any implied future investigation of such targets on the basis of specific geological, geochemical and geophysical evidence or trends are future-looking and subject to a variety of possible outcomes which may or may not include the discovery, or extension, or termination of mineralization. Further, areas around known mineralized intersections or surface showings may be marked by wording such as "open", "untested", "possible extension" or "exploration potential" or by symbols such as "?". Such wording or symbols should not be construed as a certainty that mineralization continues or that the character of mineralization (e.g. grade or thickness) will remain consistent from a known and measured data point. The key risks related to exploration in general are that chances of identifying economical reserves are extremely small.

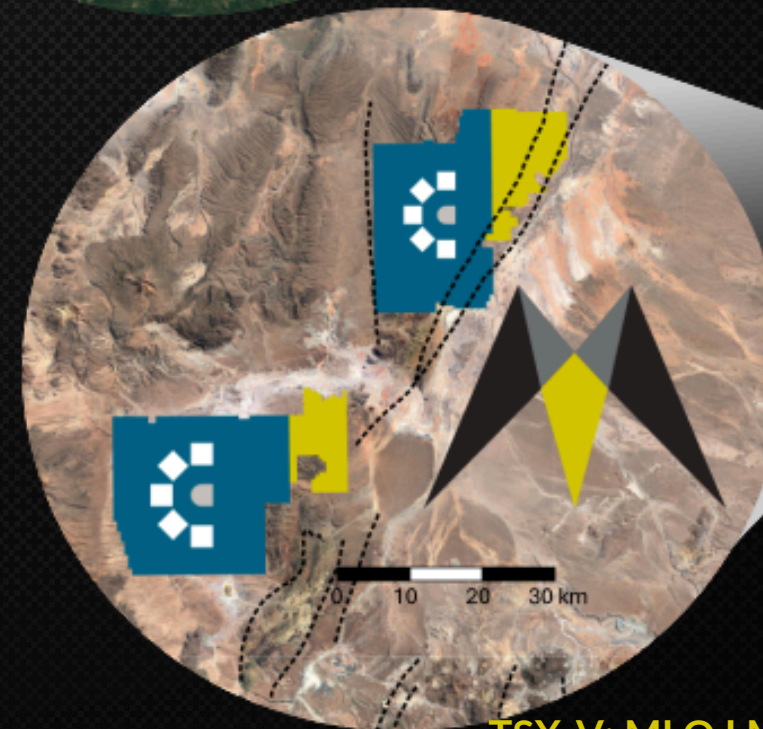
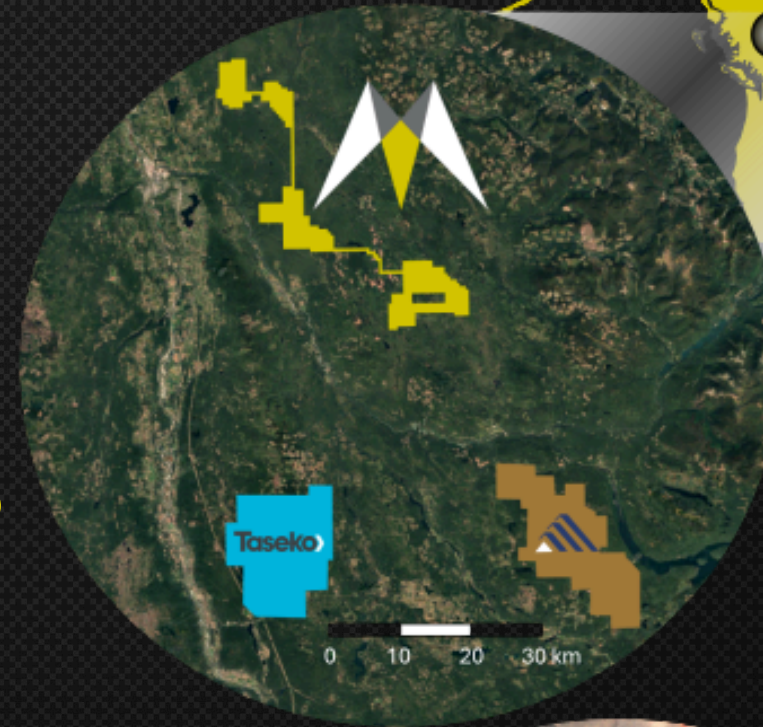
## **THIRD-PARTY INFORMATION**

Certain statements and/or graphics in the Company's press releases, website information and corporate displays, among other materials, may contain third-party historical data and other information that have not been verified by Metalero Mining Corp. and may not be accurate or complete, therefore the information should not be relied upon.

## **QUALIFIED PERSONS**

Rob L'Heureux, M.Sc., P.Geol., and Michael Dufresne, M.Sc., P.Geol., P.Geo., serve as a Qualified Persons, as defined by National Instrument NI 43-101, responsible for reviewing and approving the technical content of all materials publicly disclosed by Metalero Mining Corp., including the contents of this presentation.

Targeting **world-class** discoveries in highly prospective mineral belts in BC and Bolivia



# MANAGEMENT AND DIRECTORS



**Rob L'Heureux**  
*M.Sc., P.Geol. CEO, President & Director*

- Professional Geologist with 25+ years of mineral exploration experience globally
- Managed grassroots to resource-definition drill programs
- Worked across a wide range of base and precious metals projects



**James Greig**  
*B.A. MBA Independent Director*

- 20 years' experience across exploration, development, and production in the resource sector
- Key contributor to the 5Moz Esaase Gold Project
- Director and officer of multiple public companies



**John Williamson**  
*P.Geol. Chairman & Independent Director*

- Professional Geologist with 35+ years of global mining experience
- Founder and chairman of 20+ successful companies, including Metals Group
- Has raised over \$1B for exploration, development, and mining projects worldwide



**Sean Mager**  
*Director & Advisor*

- 30+ years of experience in the global mining sector spanning corporate development, stakeholder relations, regulatory affairs, finance, and operations
- Co-Founder of Metals Group

# CAPITAL STRUCTURE

Shares Outstanding **30,838,500**

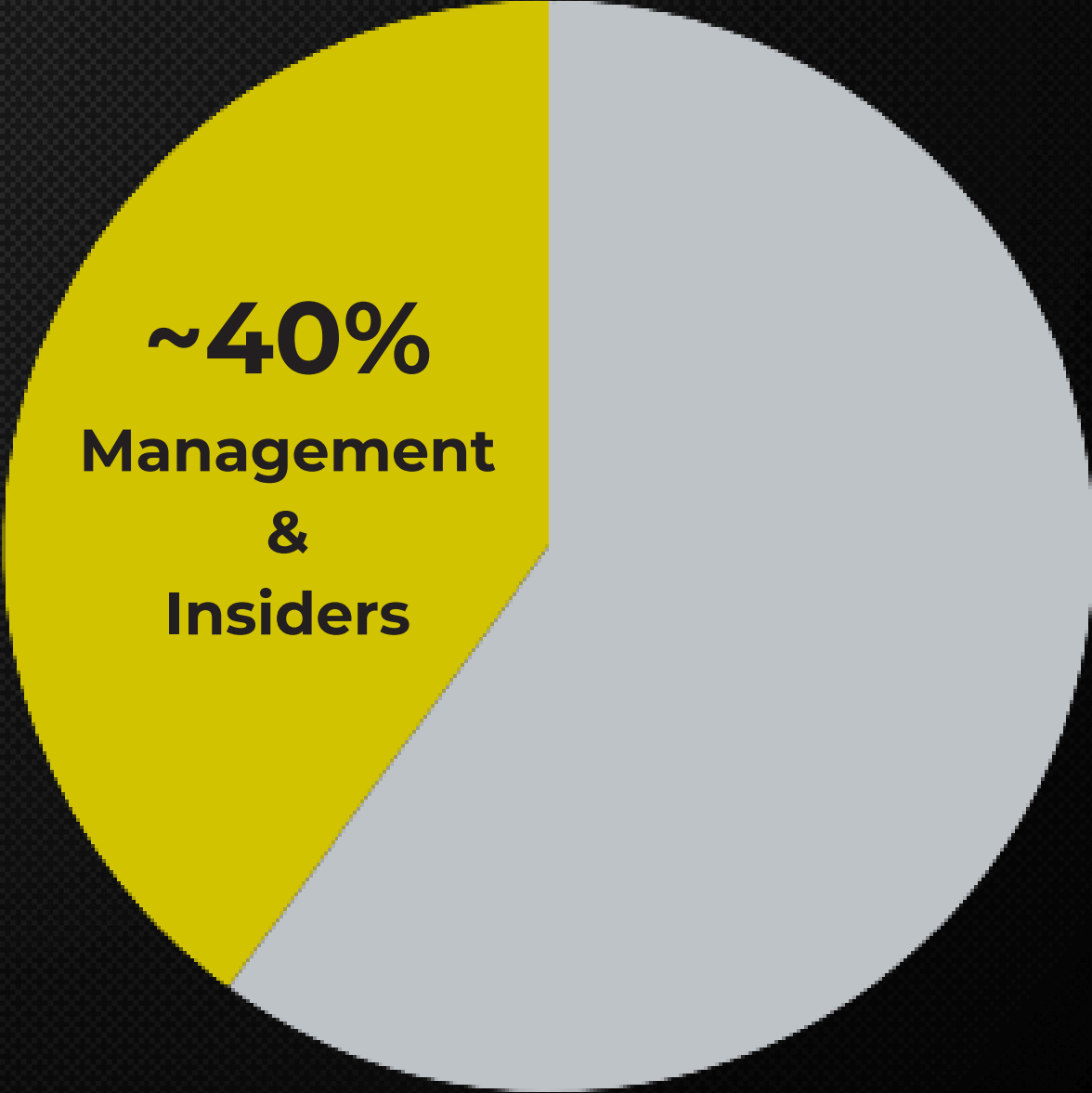
Fully Diluted **40,384,024**

Warrants **9,545,524**

Share Price **\$0.195**

Market Cap **\$6.0 Million**

52 Week Range **\$0.10 - \$0.29**



*\*as of June 17, 2026*

*Warrants priced between \$0.25-0.35, exp. Aug and Dec 2027*

# WHY BOLIVIA, WHY NOW?

## **Greenfield** discovery potential at **brownfield** risk profile



MLO concessions adjacent to the San Cristobal Mine and Isidorito Prospect



Early mover advantage



Top 5 producer of silver and tin



Vast resource potential in the Cordillera and Amazon Craton



Low cost exploration

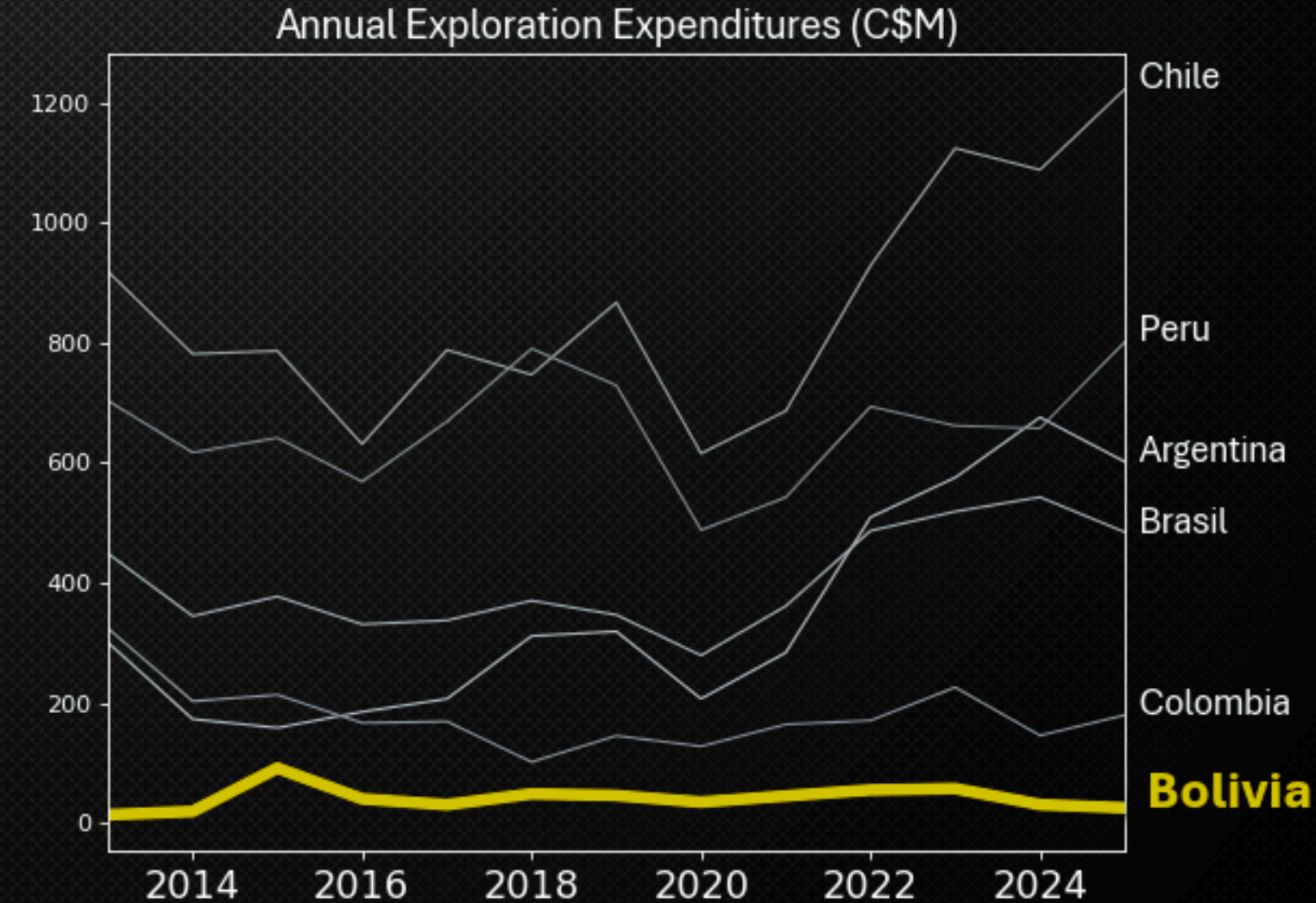
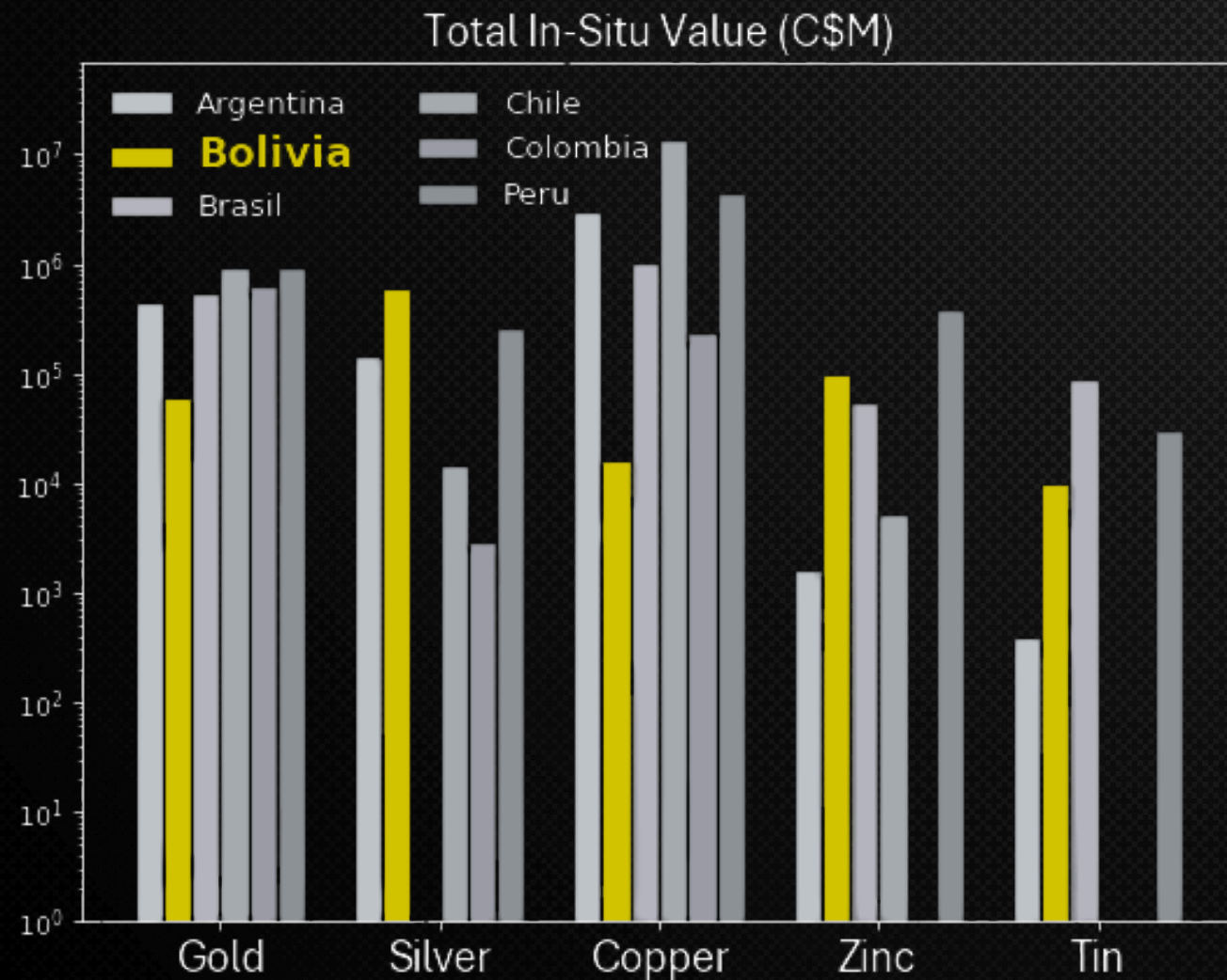


A new government committed to increasing foreign investment



# Bolivia is an Untapped Frontier

***Bolivia has world class mineral reserves yet is underexplored compared to peer countries***

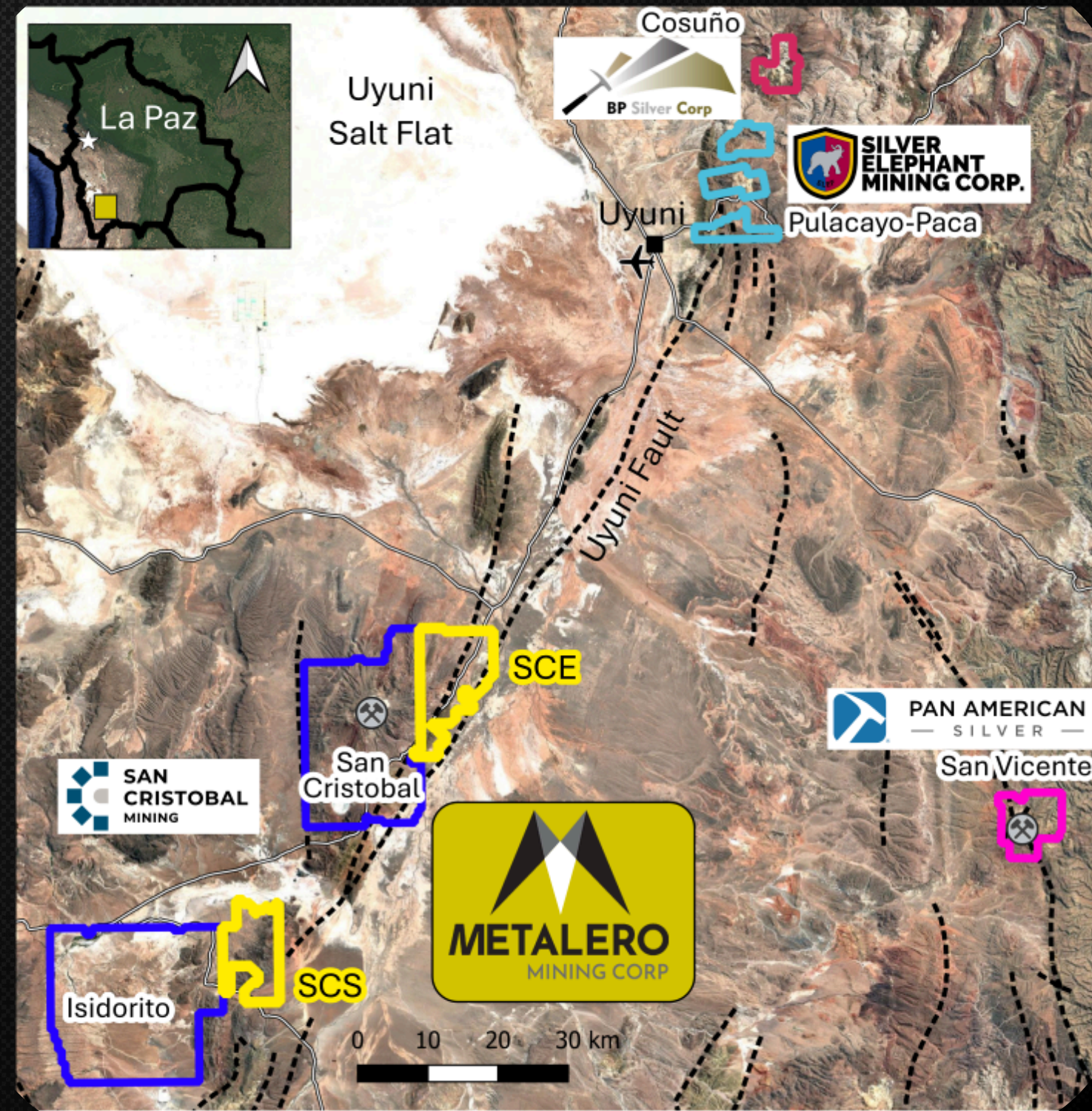


Source: S&P Capital IQ (2026)

# Strategic Land Positions in a Proven Mining Corridor

- **San Cristobal East (SCE)**
- **San Cristobal South (SCS)**

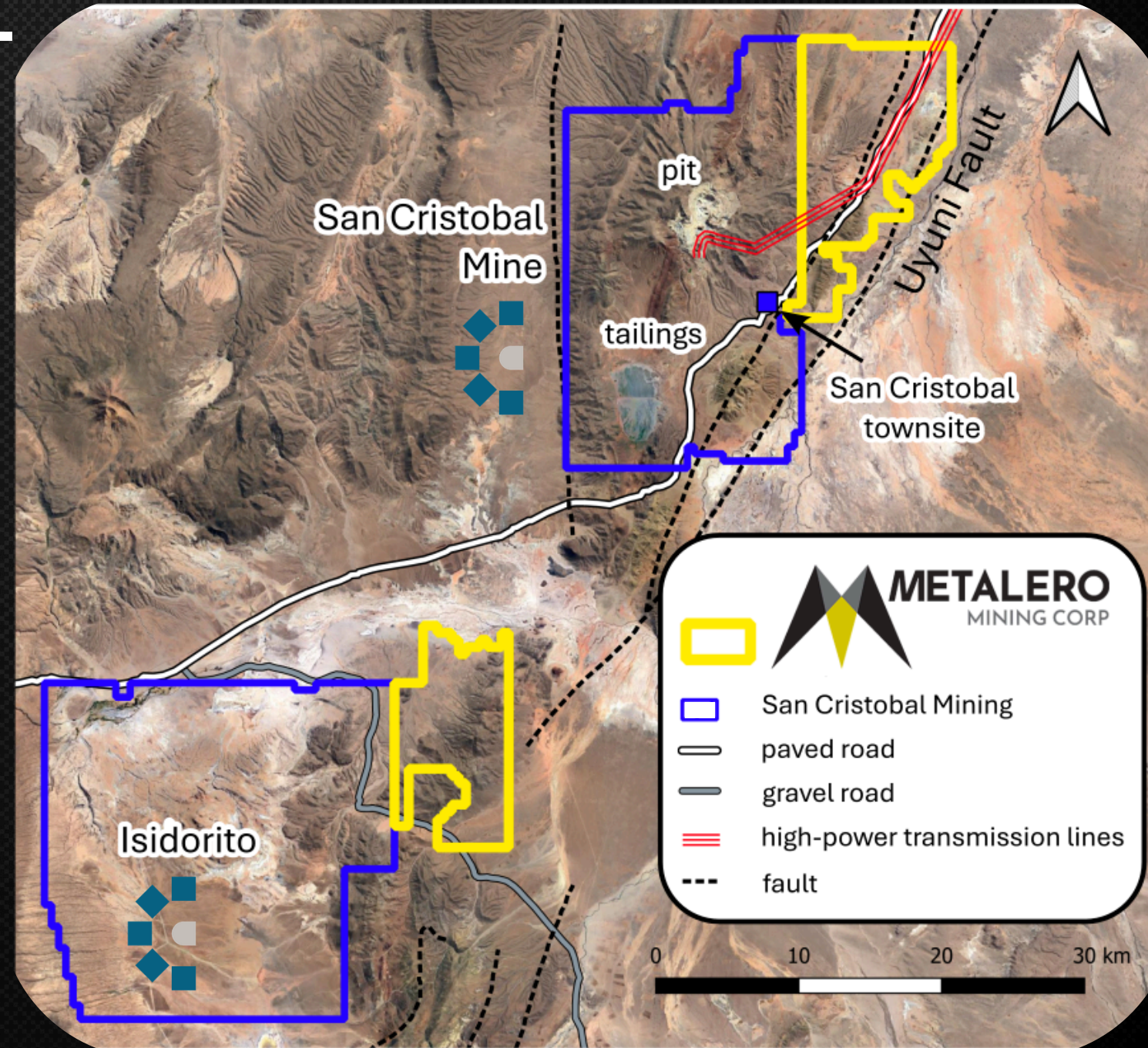
- ~230 km<sup>2</sup> amongst world-class silver-lead-zinc mines
- Along Uyuni Fault System, on strike with major producers
- No modern exploration
- Exploration commencing Q2



# NEIGHBOURING SAN CRISTOBAL MINE AND THE ISIDORITO PROSPECT

## *A Global Top-5 Silver Producer*

- Currently producing ~38 million silver equivalent ounces per year
- Potential mine life to 2050
- \$17USD/Ag-Eq ounce AISC
- Aggressive mine site exploration with up to 14 drill rigs
- Ten drill rigs at Isidorito - 40 km south of San Cristobal

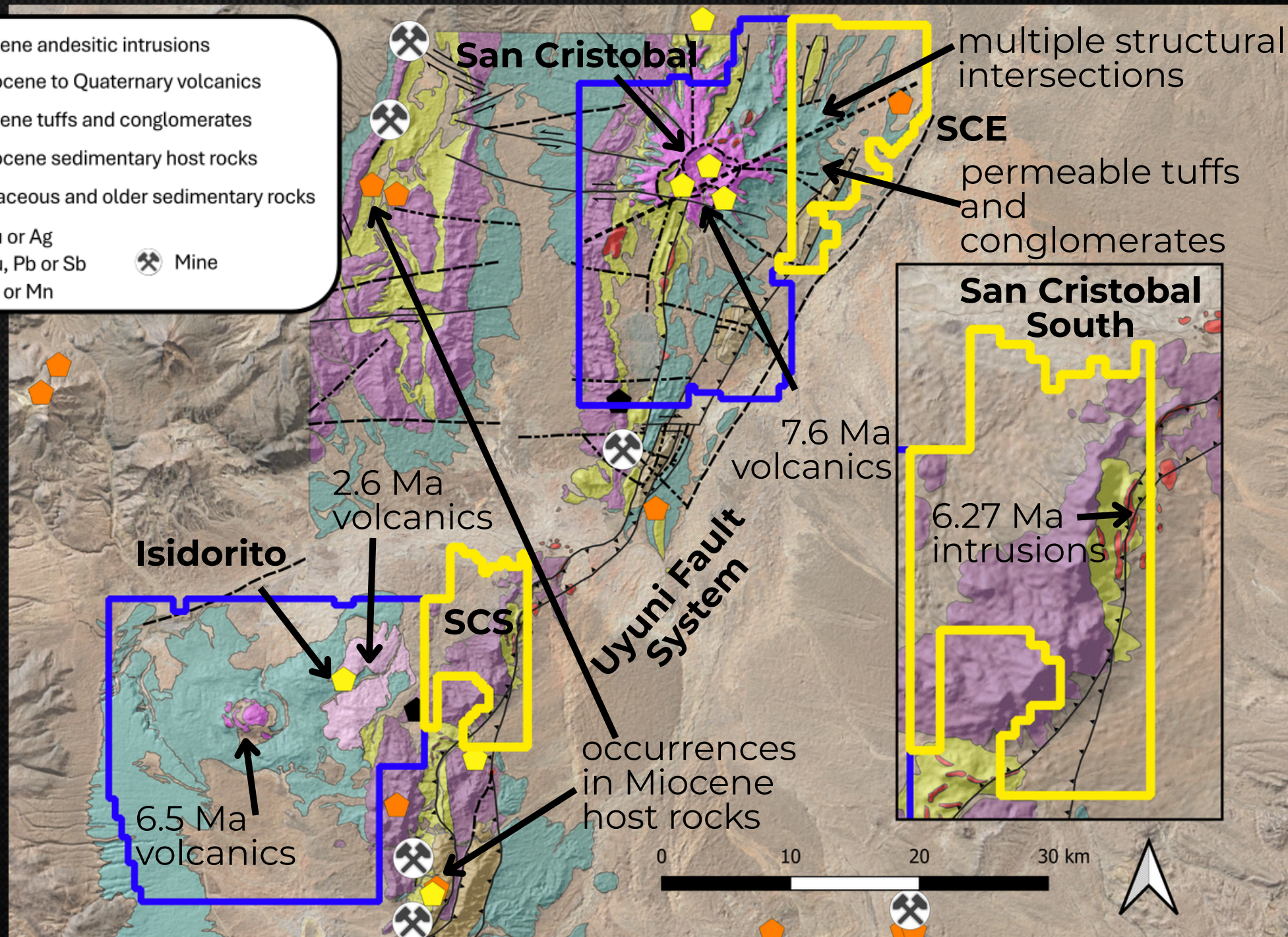


# SAN CRISTOBAL REGIONAL GEOLOGY

## High and low sulphidation epithermal systems

- Multiple epithermal systems
- Pervasive fracture network, including UFS
- Geology dominated by highly permeable tuffs and conglomerates (fluid pathways)
- Multiple mineralized magmatic phases
- Occurrences in Miocene host rocks

■ Miocene andesitic intrusions  
■ Oligocene to Quaternary volcanics  
■ Miocene tuffs and conglomerates  
■ Oligocene sedimentary host rocks  
■ Cretaceous and older sedimentary rocks  
◆ Au or Ag    ◆ Cu, Pb or Sb    ◆ Fe or Mn  
⚡ Mine



# BENSON PROJECT HIGHLIGHTS



Located in the prolific Quesnel Trough, hosting multiple Cu-Au discoveries



Major mining companies interested in the Quesnel porphyry belt



173 km<sup>2</sup> Land position



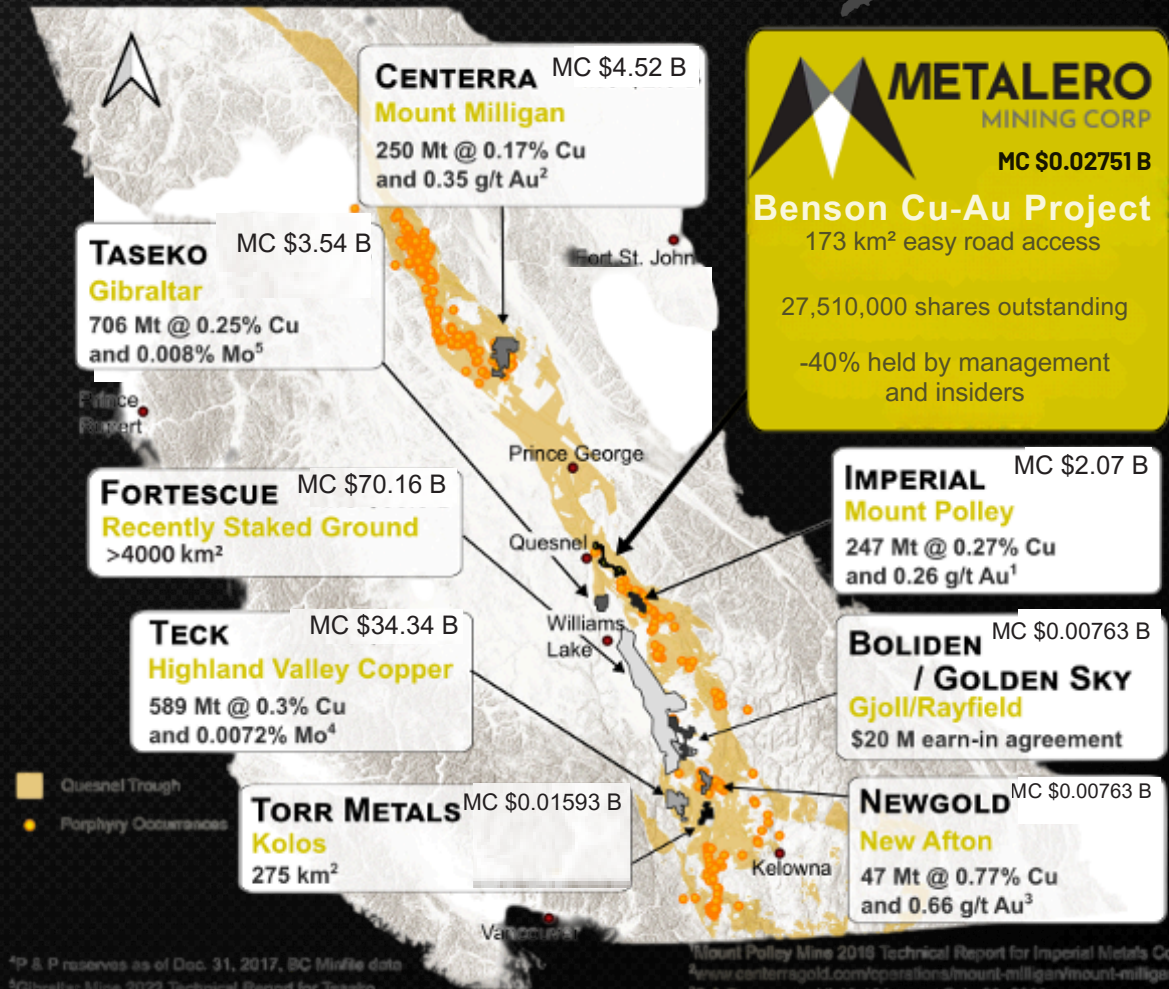
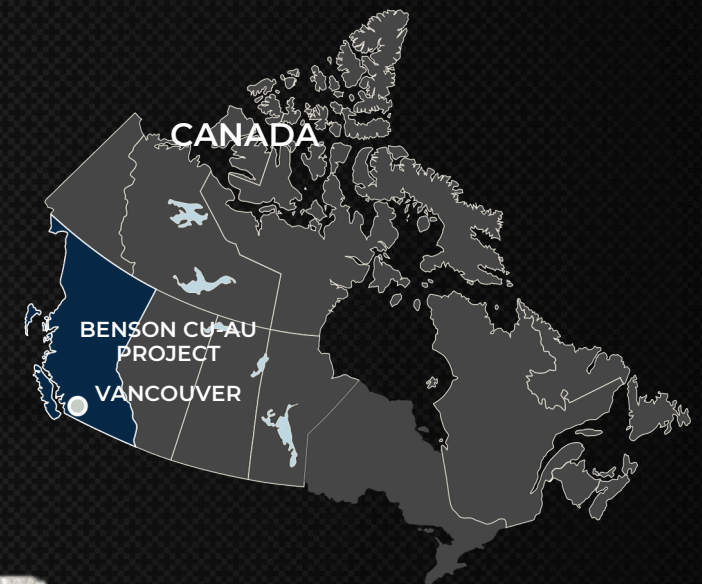
Road accessible, located 15 km east of Quesnel, British Columbia



Year-round access and low cost exploration



Option to obtain 100 % ownership

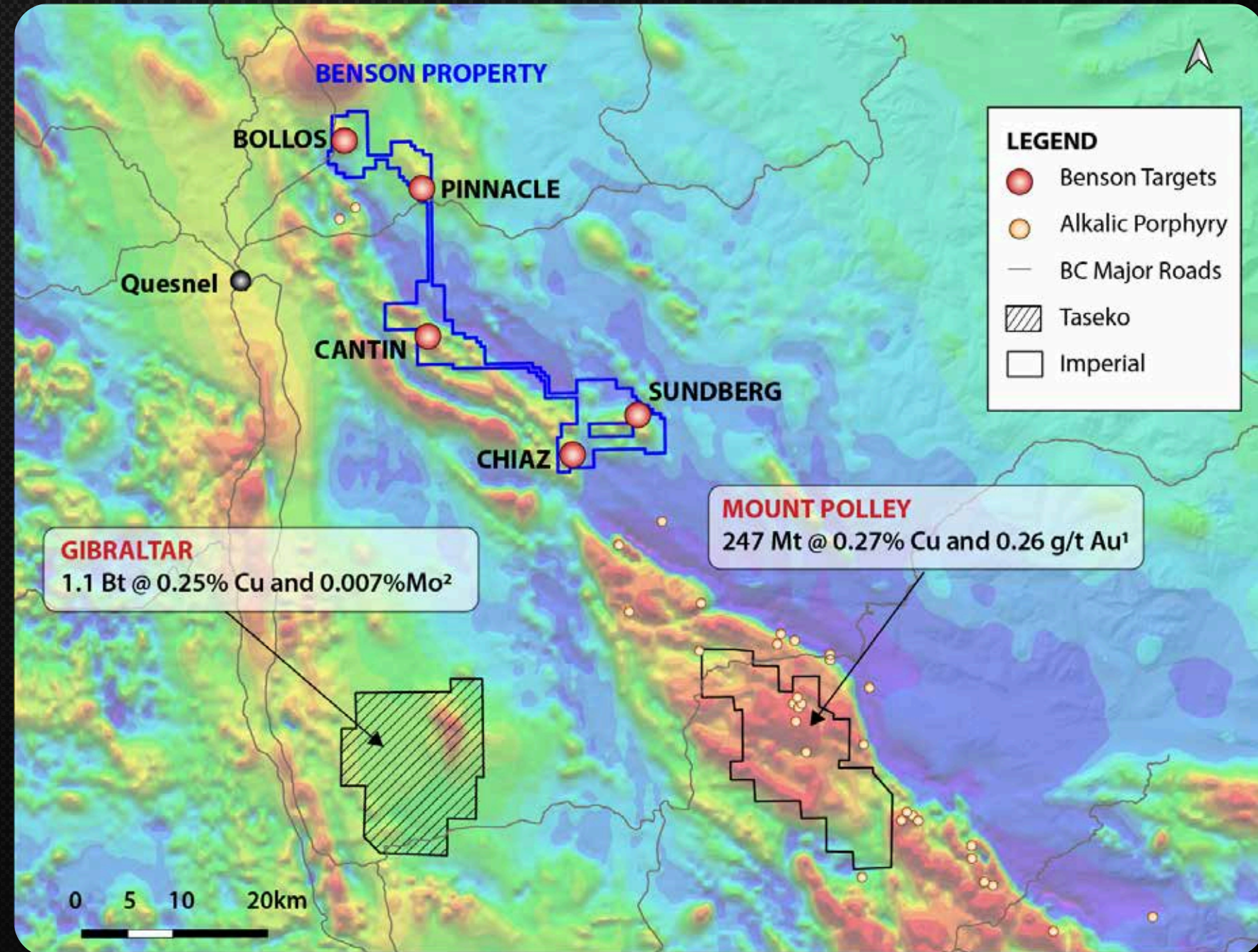


1. Mount Polley Mine 2016 Technical Report for Imperial Metals Corporation  
 2. [www.centerragold.com/operations/mount-milligan/mount-milligan-reserves](http://www.centerragold.com/operations/mount-milligan/mount-milligan-reserves)  
 3. P & P reserves, NI 43-101 report Feb 28, 2020  
 4. P & P reserves as of Dec 31, 2017, BC Minfile data

ⁱP & P reserves as of Dec. 31, 2017, BC Minfile data  
 ⁱGibraltar Mine 2022 Technical Report for Taseko  
 Mount Polley Mine 2016 Technical Report for Imperial Metals Corporation  
 www.centerragold.com/operations/mount-milligan/mount-milligan-reserves  
 P & P reserves, NI 43-101 report Feb. 28, 2020

# BENSON-PROPERTY GEOLOGY

- 5+ targets identified by Geoscience BC artificial intelligence work
- Along trend from Mt Polley underlain by the same prospective geology of Triassic-Jurassic intrusive suites
- Traversed by large-scale structures important as fluid conduits
- Historically underexplored
- Strong potential for a new discovery on the Benson property



1. Mount Polley Mine 2016 Technical Report for Imperial Metals Corporation  
2. <https://www.tasekomines.com/properties/reserves-and-resources>

# WHY INVEST?



## Opportunity

- A large-scale Bolivian land position beside a global Top-5 producer
- 5 Cu-Au targets within a 173 km<sup>2</sup> land package in BC, supported by excellent infrastructure and year-round access



## World Class Districts

- Bolivia provides exposure to a vast, underexplored mineral district
- BC's Quesnel Trough hosts long-lived mines and >360 Cu-Au mineral occurrences



## Attractive Capital Structure

- 31M shares outstanding, 40M fully diluted
- Management and insiders own ~40% of the company
- Lowest-priced shares issued at \$0.12



## Experienced Management and Technical Team

- Abundant technical and capital markets experience
- Strong history of significant returns to shareholders
- Global operating experience



TSX-V: **MLO**

**WWW.METALEROMINING.COM**

## CONTACT

### HEAD OFFICE

250 South Ridge NW  
Suite 300  
Edmonton, AB  
T6H 4M9

**1.780.916.5482**

### EMAIL

General Inquiries  
[info@metaleromining.com](mailto:info@metaleromining.com)

Accounting  
[accounting@metaleromining.com](mailto:accounting@metaleromining.com)